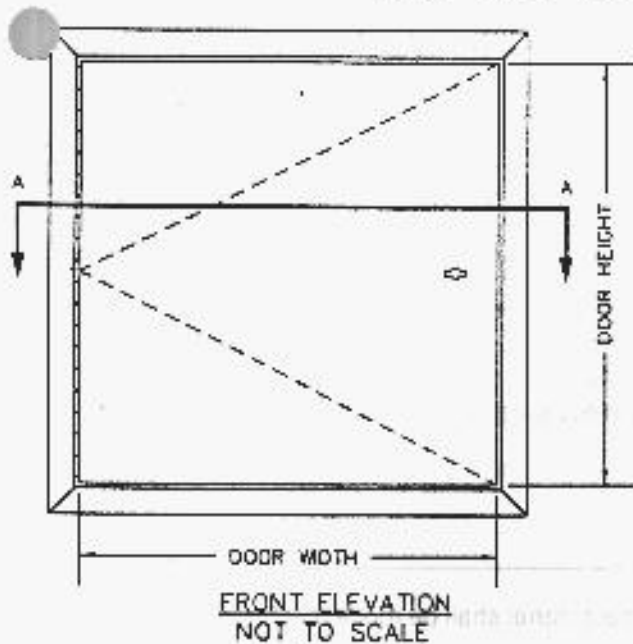


C-IT SERIES

IT: INSULATED FIRE RATED ACCESS PANEL FOR WALL AND CEILING - ALL SURFACES



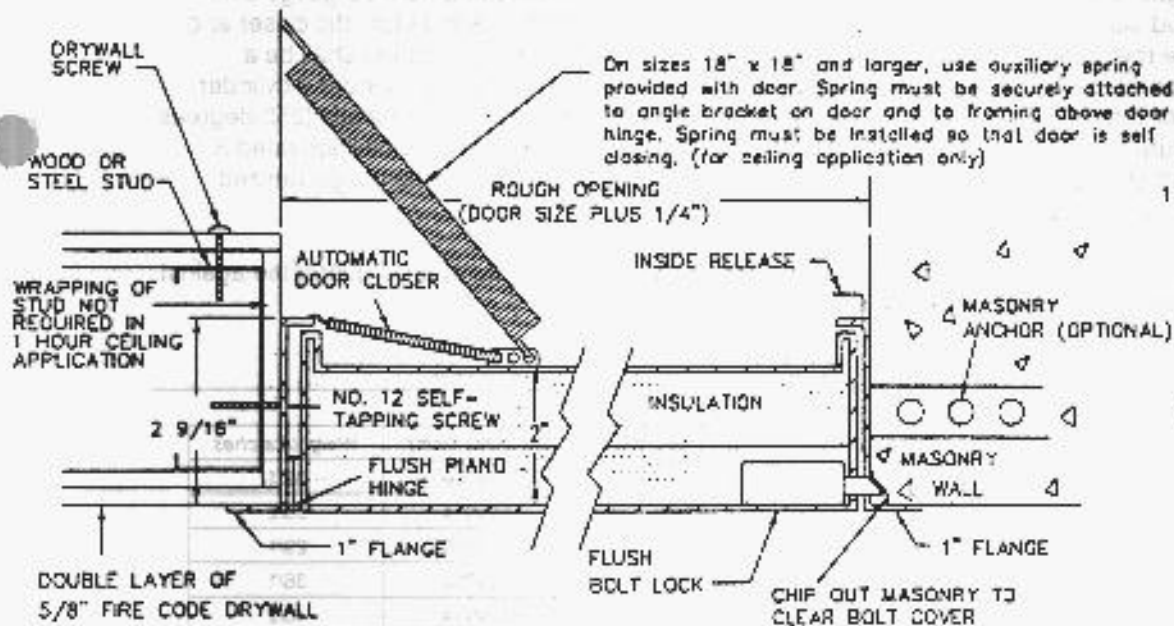
SPECIFICATIONS

- 16 GAUGE COLD ROLLED STEEL FRAME
- 20 GAUGE COLD ROLLED STEEL DOOR
- 2" THICK FIRE RATED INSULATION
- 1" WIDE EXPOSED FLANGE
- FLUSH CONTINUOUS PIANO HINGE
- SPRING DOOR CLOSURE
- FLUSH KEY OR METAL KNURLED KNOB OPERATED LOCK
- FRAMES PROVIDED WITH 1/4" MOUNTING HOLES
- PHOSPHATE DIPPED WITH BAKED ON RUST INHIBITIVE GRAY PRIME FINISH
- INTERIOR RELEASE MECHANISM ON PANELS GREATER THAN 18" IN SIZE

OPTIONS

- GALVANIZED BONDZERIZED STEEL
- STAINLESS STEEL WITH #4 SATIN POLISH FINISH
- STAINLESS STEEL CONTINUOUS PIANO HINGE WITH STAINLESS STEEL PIN (AVAILABLE ON STAINLESS STEEL PANELS ONLY)
- CONCEALED PIN HINGE
- MORTISE PREPARATION - CYLINDER PROVIDED BY OTHERS

On sizes 18" x 18" and larger, use auxiliary spring provided with door. Spring must be securely attached to angle bracket on door and to framing above door hinge. Spring must be installed so that door is self closing. (for ceiling application only)



LISTINGS:

1 1/2 HR. "B" LABEL



Warnock Hersey



A CUT-THRU SECTION
A NOT TO SCALE

CIERRA PRODUCTS

Formerly known as "CESCO Access Products" for 30+ years

PROJECT:				
CONTRACTOR:				
ARCHITECT:				
DRAWN BY: CMR	REV. DATE: 04-01-99	QUANTITY:	DATE:	TITLE: C-IT.DOC