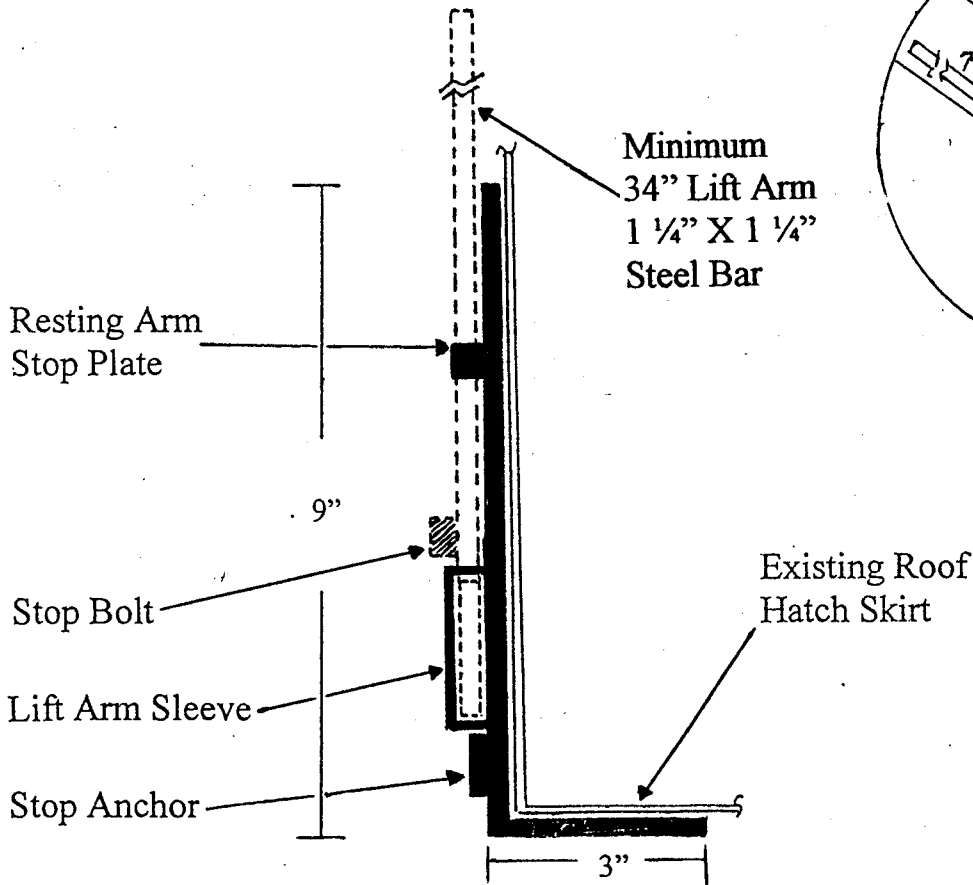
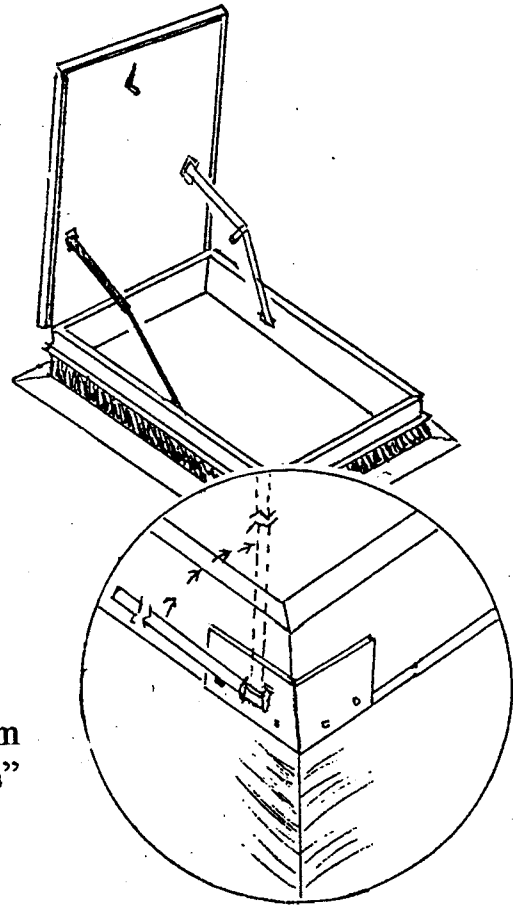




HATCH SAFETY POST

SPECIFICATIONS: Architectural Specialties Inc.'s Hatch Safety Post shall be installed on the front right hand corner of Roof Hatch flange or skirt. The Hatch Safety Post shall be completely factory assembled and ready for installation. Installation should occur on the exterior of the Roof Hatch with the Hatch Door in the closed position. The Hatch Safety Post shall be manufactured from a minimum wall thickness of 11 gauge galvanized high strength steel. The post shall be 1-1/4" x 1-1/4" tube with a minimum wall thickness of 16 gauge galvanized. Lag bolts will be provided to secure Hatch Safety Post to exterior flange of the Roof Hatch at the right front corner with the post extending up from the side not the front. All mitered corners are to be welded by the heliarc process. Steel frame and post assembly to be a black enamel finish.



CONTRACTOR: _____

JOB NAME: _____

ARCHITECT: _____

JOB ADDRESS: _____

APPROVED BY: _____

DATE: _____